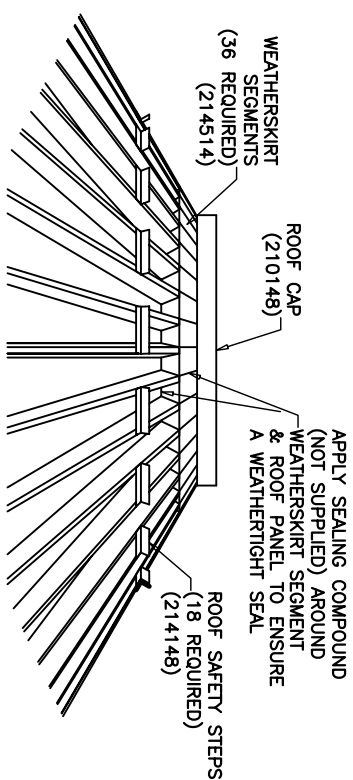
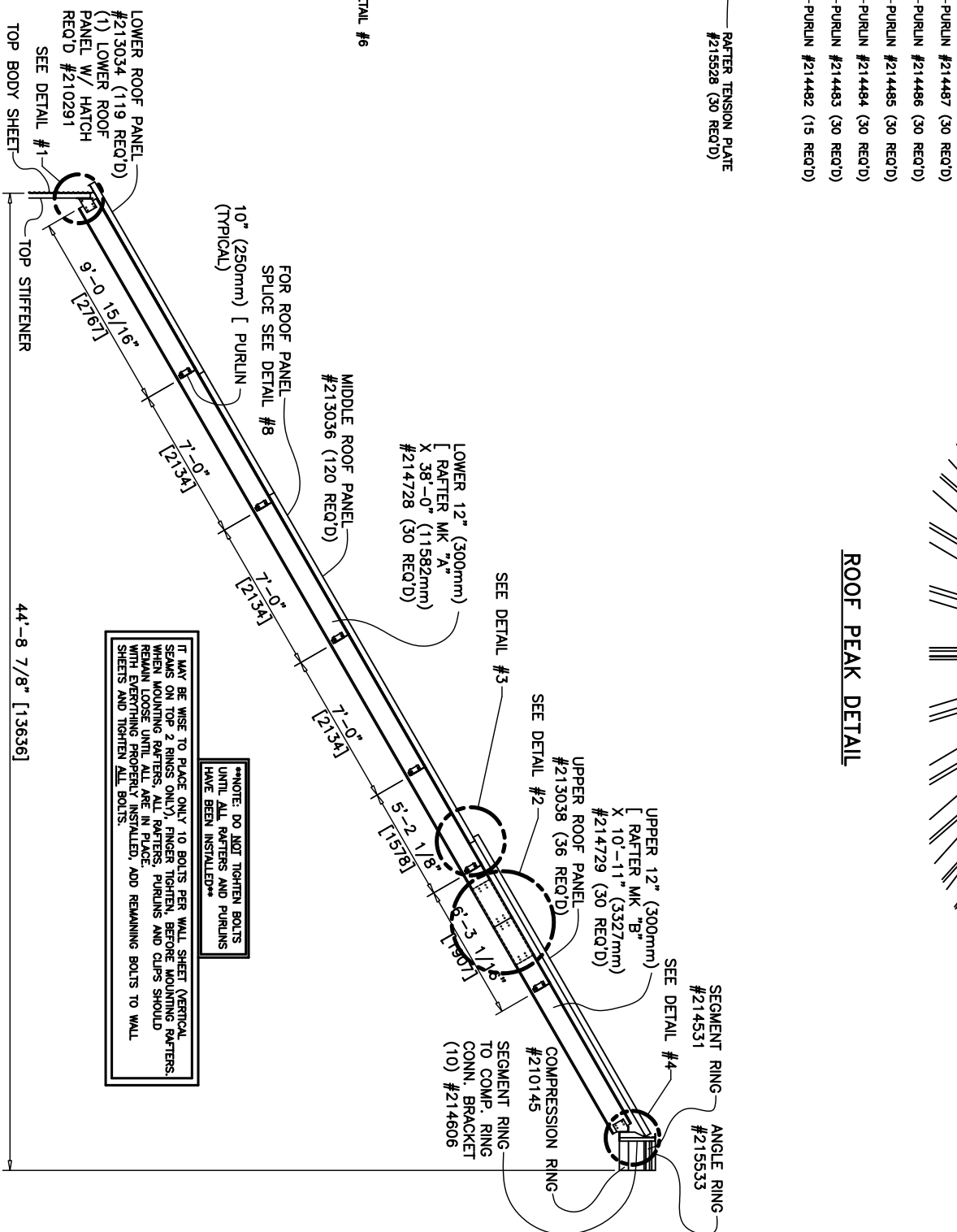


- FASTEN LOWER AND MIDDLE ROOF PANELS TO RAFTERS @ 12" (305 mm) O.C. WITH #12 X 3/4" (19 mm) SELF-DRILLING SCREWS W/SW (290155)

ROOF FRAMING PLAN
90' (27.43m) DIA ROOF



ROOF PEAK DETAIL



RAFTER TENSION PLATE
#215528 (30 REQ'D)

- PURIN #214487 (30 REQ'D)
- PURIN #214486 (30 REQ'D)
- PURIN #214485 (30 REQ'D)
- PURIN #214484 (30 REQ'D)
- PURIN #214483 (30 REQ'D)
- PURIN #214482 (15 REQ'D)

LOWER 12" (300mm)
[RAFTER MK "A"
X 38'-0" (11582mm)
#214728 (30 REQ'D)

MIDDLE ROOF PANEL—
#213036 (120 REQ'D)

FOR ROOF PANEL
SPLICE SEE DETAIL #8
10" (250mm) [PURLIN
(TYPICAL)

LOWER ROOF PANEL—
#213034 (119 REQ'D)
(1) LOWER ROOF
PANEL W/ HATCH
REQ'D #210291


SEE DETAIL #1
TOP BODY SHEET
TOP STIFFENER

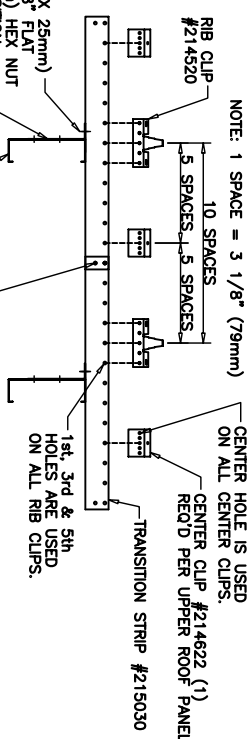
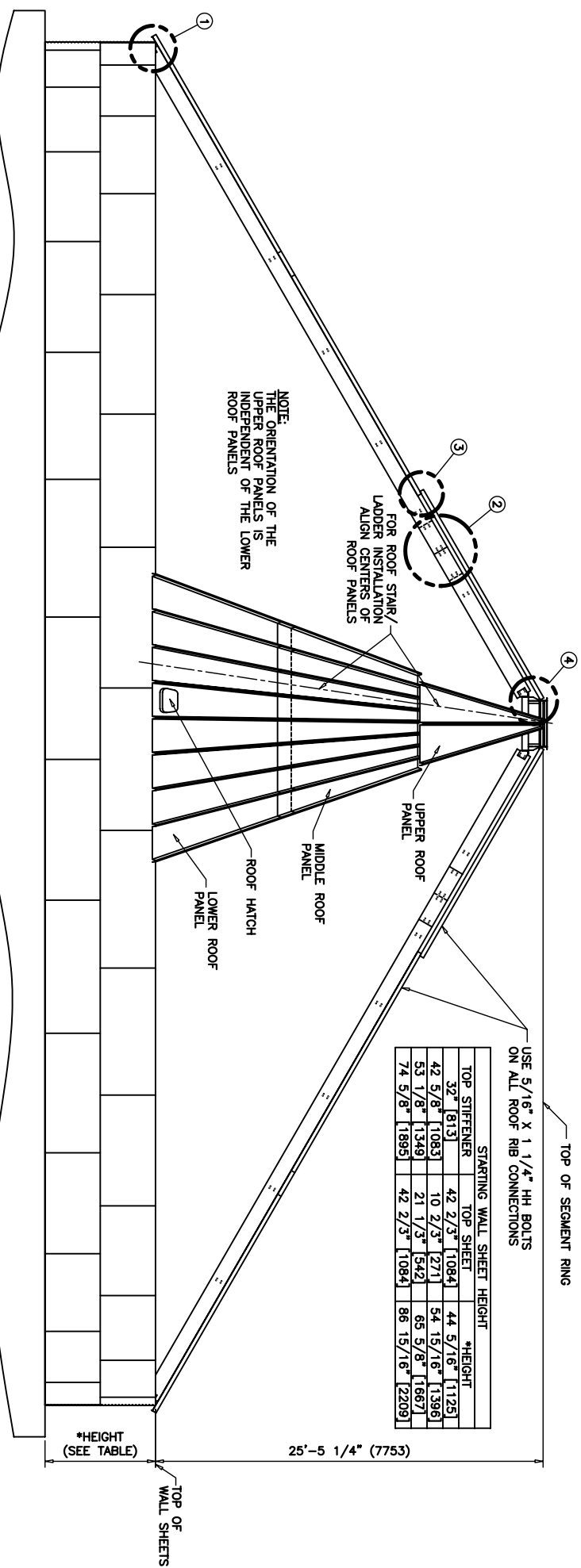
44'-8 7/8" [13636]

IT MAY BE NECESSARY TO PLACE ONLY 10 BOLTS PER WALL SHEET (VERTICAL SEAMS ON TOP 2 RINGS ONLY), FINGER TIGHTEN, BEFORE MOUNTING RATCHETS. WHEN MOUNTING RATCHETS, ALL RATCHETS, PURLINS AND CLIPS SHOULD REMAIN LOOSE UNTIL ALL ARE IN PLACE. WITH EVERYTHING PROPERLY INSTALLED, ADD REMAINING BOLTS TO WALL SHEETS AND TIGHTEN ALL BOLTS.

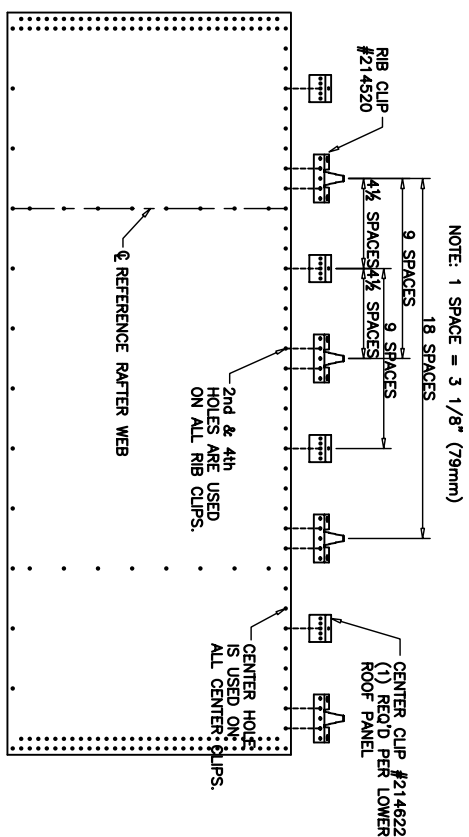
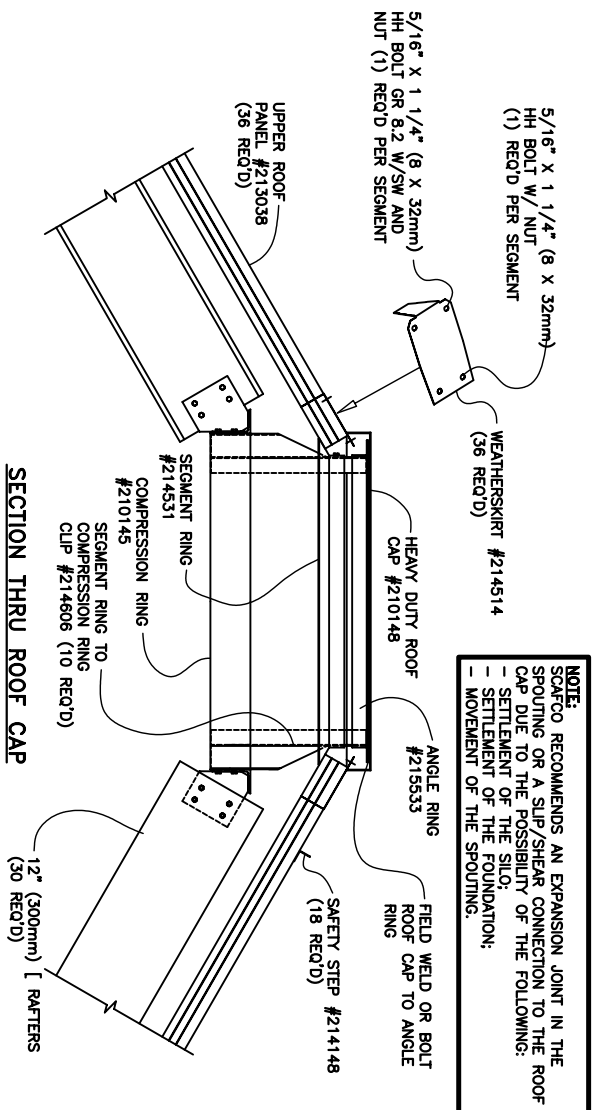
****NOTE: DO NOT TIGHTEN BOLTS UNTIL ALL RAFTERS AND PURLINS HAVE BEEN INSTALLED****

RAFTER SECTION

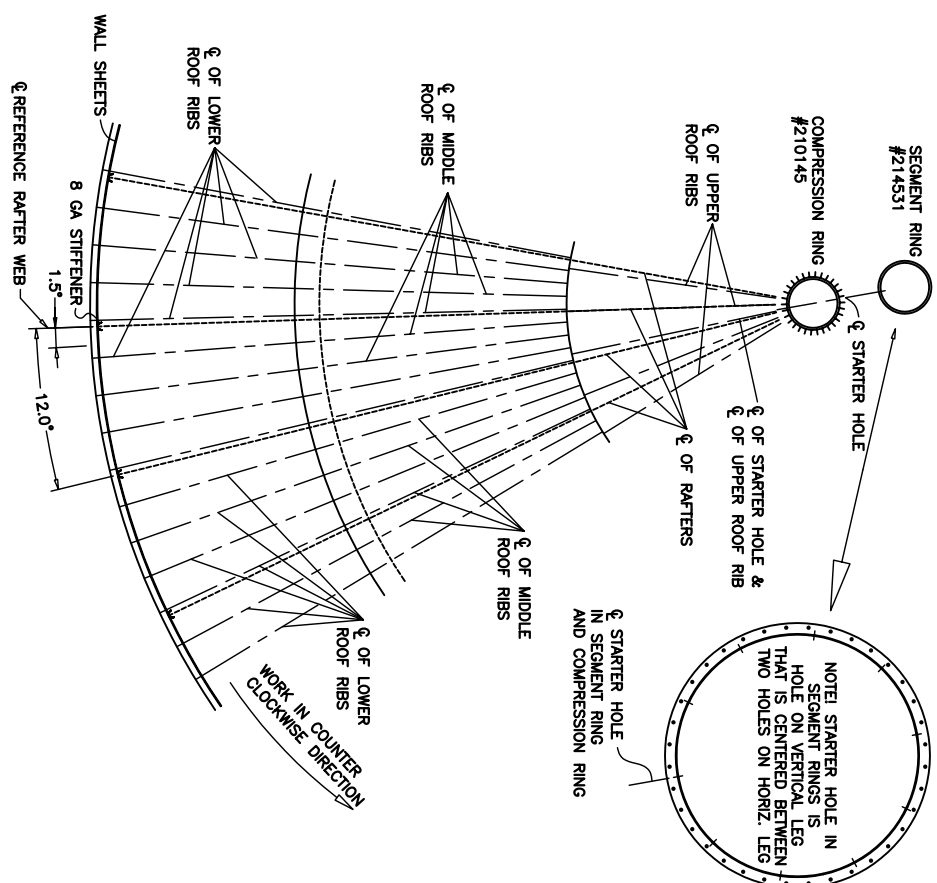
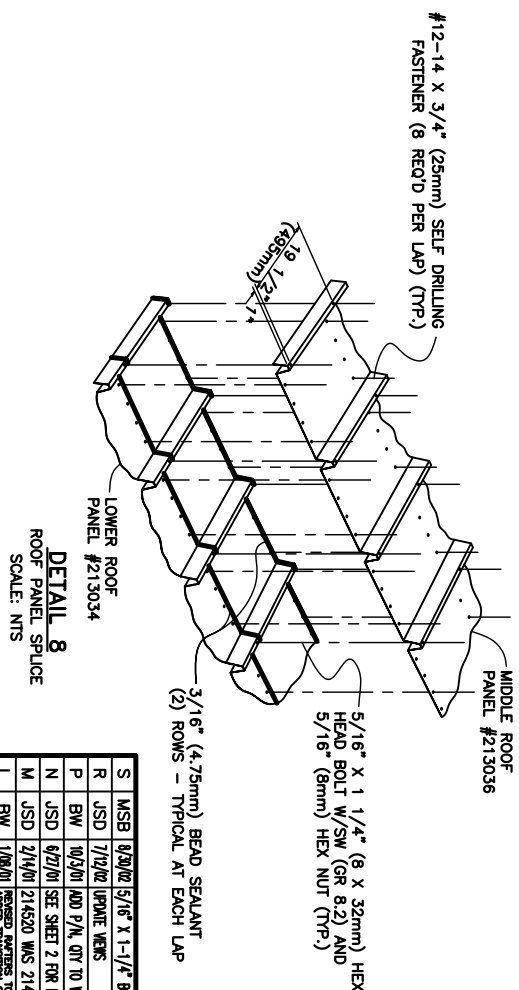
 SCAARCO. SCAARCO Steel Systems Company 2020 E. Main Avenue Spokane, WA 99201-1521 USA Tel: 509-335-1271 • Fax: 509-335-8130 spokane@scarco.com • www.scarco.com		90° DIAMETER BIN ROOF ERECTION INSTRUCTIONS	
REV	BY	DATE	DESCRIPTION OF CHANGE
1	SC	3/24/05	ISSUED
2	SC	3/24/05	SCALE 1/8"
3	SC	3/24/05	SHEET 1 OF 3
4	SC	3/24/05	90° ROOF
5	SC	3/24/05	REVISION



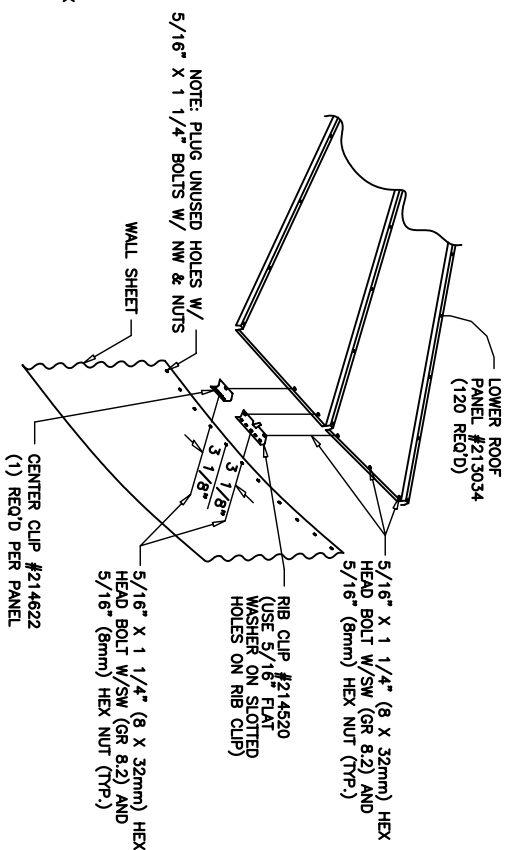
VIEW OF TRANSITION STRIP BETWEEN UPPER & LOWER ROOFS



VIEW SHOWING CENTER & RIB CLIP CONNECTION TO TOP WALL SHEET



DETAIL R
ROOF PANEL LAYOUT
SCALE: 1:60



RIB/CENTER CLIP DETAIL

TYPICAL AT EACH LAP									
REV	BY	DATE	DESCRIPTION OF CHANGE	REV	BY	DATE	DESCRIPTION OF CHANGE	REV	BY
J	USD	5/17/00	REV PARTS & PLAINS, UPDATE DMS						
H	CAH	7/14/00	SEE SHEET 2 FOR REVISION						
G	USD	9/21/05	REMOVED AND REBARRED TO OLD						
F	AJD	9/23/05	SEE SHEET 1 & 2 FOR REVISION						
E	USD	11/4/02	SEE SHEET 2 FOR REVISION						
D	SLU	11/4/02	SEE SHEET 2 FOR REVISION						
C	GW	11/20/00	ADD 5/16" F11 W/ST NUT @ RB CLIPS						
B	JLMT	8/6/04	REMOVED ROOF CAP ATTACHMENT, ELEV. NEW						
A	DEG	7/8/04	UPDATED DRAINAGES						
S	MSB	8/20/02	5/16" X 1-1/4" BOLTS WERE 5/16" X 3/4"						
R	USD	7/17/00	UPDATE NOTES						
P	BW	10/20/01	ADD P/N, CRT TO WEATHERING CALCULOT						
N	USD	6/27/00	SEE SHEET 2 FOR REVISION						
M	USD	2/14/00	2144520 WAS 214682						
L	BW	1/30/01	REMOVED PARTS TO 1/4" & 3/8" OPPOSITE DIRECTION						
K	USD	7/21/00	214682 WAS 214682, UPDATE DRAINAGE						